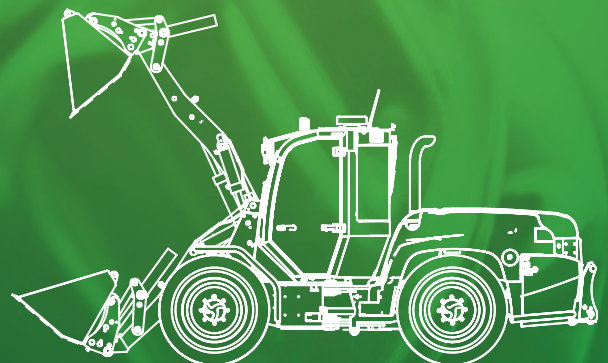




## > LM Trac 687

LM Trac 687 is the largest multipurpose machine in its product family, whose strong frame structure guarantees stable and reliable operation in varying conditions. Despite the solid structure, the agile machine is suitable for tight and demanding locations. The load-sensing hydraulic system and extensive connections make the LM Trac versatile. The modern, ergonomically optimized cab makes the driver's work light and efficient.



## › Technical specification

# 687

### ENGINE AND TRANSMISSION

ENGINE	Cummins QSF Stage V
Cylinder volume	3 800 cm <sup>3</sup>
Power	111 kW / 2300 rpm
Torque	600 Nm / 1400 rpm
Powerline	Hydrostatic 4WD / elec. controlled
Oil out put	0 – 185 lit/min
Oil pressure max.	420 bar
Driving speed	0 – 50 km/h
Driving direction	Elec. switch
Steering	Hydrostatic, articulated
Brakes	Wet disc brakes front & rear axl, hand brake front axl
Tyres	NOKIAN RENKAAT TRI 420/65R24
Fuel tank	75 litres (100 litres as an option)

### WORKHYDRAULICS

Type	Load sensitive
Motor hydraulic	0 – 160 l/min, portable (0 – 200 option)
Pressure max.	200 bar
Control	Joystick
Implement connection	Kunta-500 / Valtra / Volvo / Trima
Oil tank	160 litres
Electric system	12 V, 135

### STANDARD EQUIPMENT

	AC autom., LED worklights, integrated LED beacons
ACCESORIES	Rear lift sys., central lubrication, Webasto, air seat, etc

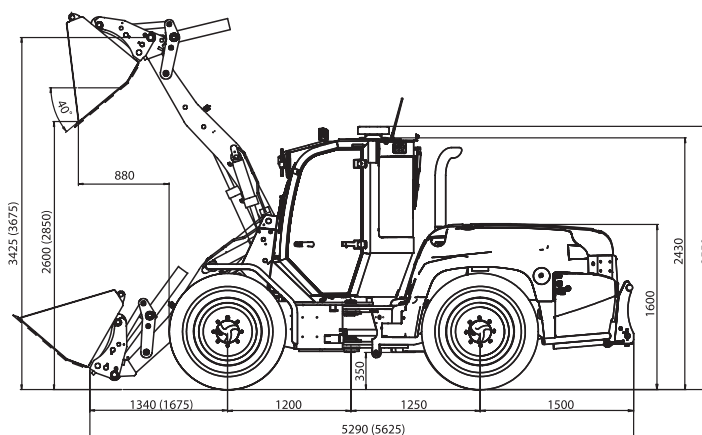
### MEASURES AND WEIGHT

Turning radius 4000 mm	Weight 6-7 tn	Width 1950 mm
------------------------	---------------	---------------

Lifting hight

up to pin

3250 mm



WE RESERVE THE RIGHT TO MAKE CHANGES WITH OUT PRIOR NOTICE

**FACTORY:**



Kiwa Certified  
Quality Systems  
ISO 9001  
ISO 14001

**DEALER:**

OY LAI-MU AB  
NIITTAJANTIE 9  
FI-26820 RAUMA

TEL: +358 2 8387 2400  
FAX: +358 2 8387 2444

www.laimu.fi  
laimu@laimu.fi